

**Photographs,
Prints and Postcards**

of the

**State Penitentiary
Stillwater, Minnesota**

and the

**State Reformatory
St. Cloud, Minnesota**



Stillwater Prison and Warden's House
Date of photograph: 1885
Source: Washington County Historical Society



STATE PRISON, STILLWATER.

Source: 1897 Minnesota Legislative Manual.
Date of photograph: ca. 1897.



Minnesota State Prison
Stillwater, Minnesota
Date of photograph: 1902
Source: Minnesota Historical Society/Wikimedia Commons



State prison under construction
Stillwater, Minnesota
Date of postcard: 1909
Source: LakesnWoods.com



State Prison
Date of photograph: 1900s
Source: LakesnWoods.com



Hospital, State Prison
Stillwater, Minnesota
Date of photograph: 1909
Source: LakesnWoods.com



Main Entrance to State Prison
Date of postcard: 1910s
Source: LakesnWoods.com



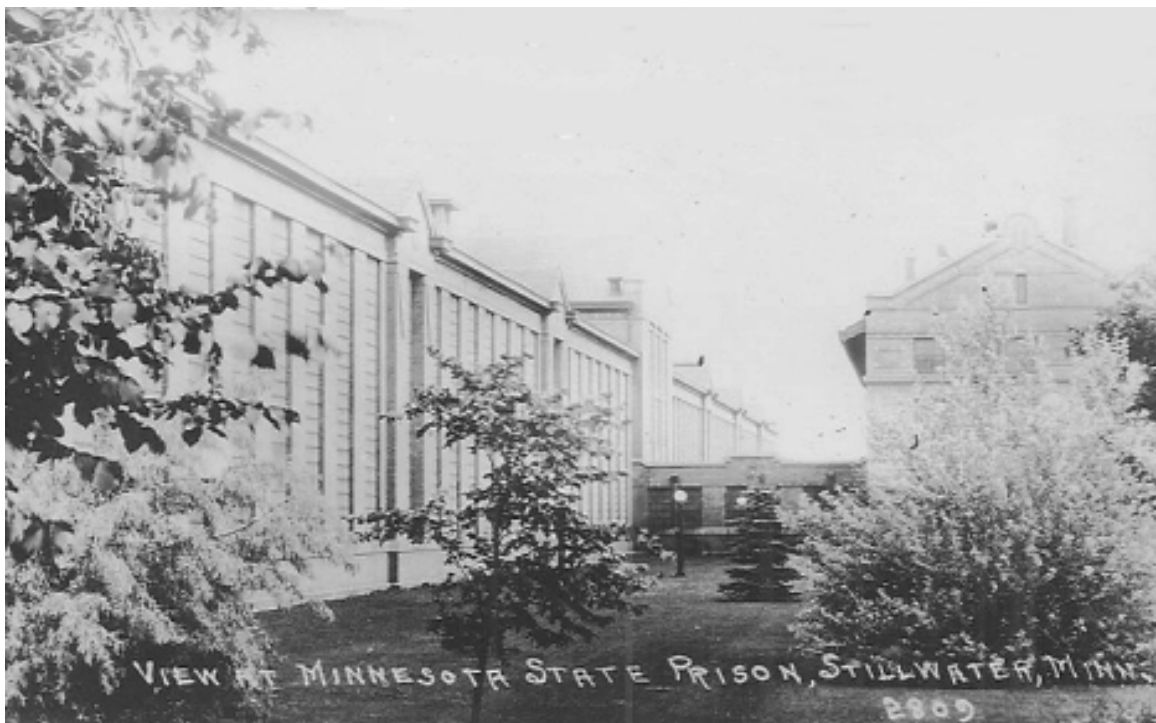
State Prison
Date of postcard: 1910s
Source: LakesnWoods.com



State prison
Date of photograph: 1912
Source: Minnesota Department of Corrections website



State Prison
Date of photograph: 1930s
Source: LakesnWoods.com



State Prison
Date of photograph: 1930s
Source: LakesnWoods.com



Aerial photograph of Minnesota Prison
Stillwater

Date of photograph: unknown

Source: Minnesota Department of Corrections



Source: KARE-Sky Television

Date of photograph: ca. 2016

When You Are In The Twin Cities
Be Sure To Visit
The Wonderful New \$2,225,000
Minnesota State Prison

Open for the inspection of the public every day
except Sundays and Holidays, from 8 to 11 a. m.
and from 12:30 to 4:30 p. m.

You will have added respect for the State of Min-
nesota after seeing this splendid group of buildings.

It is the finest public institution of its kind in
the world.

Crookston Daily Times
June 13, 1914, at page 3.

When You Are In
MINNEAPOLIS or ST. PAUL
Be Sure To Visit The Wonderful New
Minnesota State Prison
IN STILLWATER

Open for the inspection of the Public every day
except Sundays and Holidays, from 8 to 11 a. m.
and from 12:30 to 4:30 p. m.

Round Trip, Including Prison Visit:

From St. Paul, 3½ Hours

From Minneapolis, 5½ Hours

• The Finest Public Institution of its kind In The World •

Wabasha Herald
October 26, 1916, at page 6.



Minnesota State Correctional Facility
Formerly known as the State Prison
Stillwater, Minnesota
It is on the National Register of Historic Places
Date of photograph: September 26, 2012
Source: McGhievers photographer
Creative Commons, Wikimedia



State Reformatory
St. Cloud, Minnesota
Date of postcard: 1920s
Source: LakesnWoods.com



Aerial view of state reformatory
St. Cloud, Minnesota
Date of postcard: 1930s
Source: LakesnWoods.com



Night at State Reformatory
St. Cloud, Minnesota
Date of postcard: 1930s
Source: LakesnWoods.com



**Minnesota State Correctional Facility
f/k/a Minnesota State Reformatory for Men
St. Cloud, Minnesota
It is on the National Register of Historic Places
Date of photograph: April 10, 2013
Source: Bobak Ha'Eri photographer
Creative Commons/Wikimedia**

Posted: Minnesota Legal History Project
February 5, 2017.

Additional photographs and prints
will be posted in a separate article when they become available.

Efforts have been made to confirm that
each photograph is in the public domain.
If one is not, please notify the MLHP immediately,

